


Cybersecurity Checklist: How do you Rate?

Presented by Joe Howland & Heather Ricard
Session # 1



Assess | Improve | Manage
Information Technology

Grand Prize - iPad Mini

All day today life



Don't forget to fill out your card!



Assess | Improve | Manage
Information Technology

Why Cybersecurity?

April 11, 2019

Ransomware knocks Greenville, N.C. offline

David Oberly

GRENVILLE, N.C. (WNCN) — A ransomware attack on Tuesday knocked Greenville, N.C., offline for several hours, leaving residents in the dark and businesses unable to operate.

For Second Time in a Year, Baltimore Hit With Ransomware

Baltimore, Md. (AP) — Baltimore, Md., was hit with a ransomware attack for the second time in a year, this time knocking out the city's police and emergency services.

Hit by Ransomware Attack, Florida City Agrees to Pay Hackers \$600,000

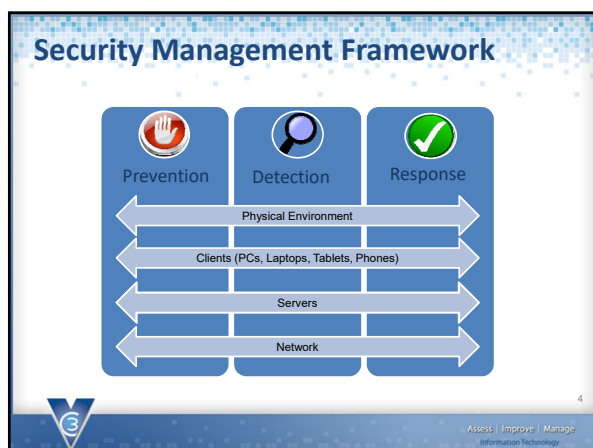
FLORIDA CITY (AP) — A city in Florida has agreed to pay hackers \$600,000 to stop a ransomware attack that has paralyzed the city's government services.

Another Florida city pays hackers over ransomware attack

In the last week, hackers have made more than \$1 million in ransomware payments out of Florida.



Assess | Improve | Manage
Information Technology



Prevention

Solutions to pro-actively identify weaknesses in your IT infrastructure and alert to issues that may be security related

- ☐ **Employee Policies and Training**
 - Make employees part of your security solution
- ☐ **Two Factor Authentication**
 - Protection for compromised accounts
- ☐ **Anti-Virus Platform**
- ☐ **SPAM Filtering**
- ☐ **Malware Protection**
- ☐ **Data Loss Prevention**
 - Prevent confidential data from leaving your network
- ☐ **Patch Management**
 - Keep servers and workstations up to date
- ☐ **IPS (Intrusion Prevention Services)**
- ☐ **Change Control Policies and Procedures**
- ☐ **Mobile Device Management**
 - Protect phones, tablets, laptops
- ☐ **Web Content Filtering**
 - Stop users from connecting to malicious sites

5

Assess | Improve | Manage
Information Technology


Detection

Technologies used to detect suspicious traffic or behaviors

- ☐ **Regular Security Scans**
 - Find security holes before someone else does
- ☐ **Dark Web Monitoring**
 - Identify compromised accounts
- ☐ **IDS (Intrusion Detection Services)**
 - Watch for suspicious network traffic
- ☐ **Rogue System Detection**
 - Identify devices that do not belong on your network
- ☐ **SIEM (Security Incident and Event Management)**
 - Capture and correlate information from different systems

6


Assess | Improve | Manage
Information Technology



Response

Solutions and processes that help mitigate the impact of a security incident

- ☐
Rock Solid Data Backups
 - Offsite retention is critical!
 - How long will it take you to restore?
- ☐
Offsite Log Retention
 - Maintain the ability to research what happened
- ☐
Incident Response Plan
 - Plan for the worst so you aren't guessing after an incident
- ☐
Cyber Liability Insurance
 - Assistance when an event occurs



7

Assess | Improve | Manage
Information Technology

Cyber Liability Insurance

Why do you need cyber liability insurance?

- Cyber incidents are costly and complex
- Requires forensic analysis to determine the root cause of the event
- Notification requirements vary by state and are very complex
- Mitigate reputational damage
- Assistance with regulatory requirements



8

Assess | Improve | Manage
Information Technology

Cyber Liability Insurance

Cyber liability-SCMIRF coverage

- Provides coverage to members through AIG-application required
- Limits of \$1 million available, with higher limits available based on budget size of municipality
- Coverage includes
 - Security & Privacy Liability Insurance
 - Event Management Insurance
 - Network Business Interruption Insurance
 - Cyber Extortion Insurance


9

Assess | Improve | Manage
Information Technology

Cyber Liability Insurance

Cyber liability-SC claims examples

- City network down for weeks after network exposed to virus from laptop
- Data breach between city and payroll provider
- Network hacked and ransom requested

10

Assess | Improve | Manage
Information Technology

Security Checklist

<ul style="list-style-type: none"> ❑ Prevention ❑ Anti-Virus Platform ❑ SPAM Filtering ❑ Malware Protection ❑ Data Loss Prevention ❑ Patch Management ❑ IPS (Intrusion Prevention Services) ❑ User Policies and User Training ❑ Change Control Policies and Procedures ❑ Two Factor Authentication ❑ Mobile Device Management ❑ Web Filtering 	<ul style="list-style-type: none"> ❑ Detection ❑ Rogue System Detection ❑ IDS (Intrusion Detection Services) ❑ SIEM (Security Incident and Event Management) ❑ Regular Security Scans ❑ Dark Web Monitoring ❑ Response ❑ Rock Solid Backups ❑ Offsite Log Retention ❑ Incident Response Plan
-----------------------------------------------------------------------------------------------------------------------------------------------------------------------------------------------------------------------------------------------------------------------------------------------------------------------------------------------------------------------------------------------------------------------------------------------------------------	----------------------------------------------------------------------------------------------------------------------------------------------------------------------------------------------------------------------------------------------------------------------------------------------------------------------------------------------------------------------------------------------

11

Assess | Improve | Manage
Information Technology

Thank You!

Stop by our booth to learn more.

Joe Howland
joe.howland@vc3.com

12

Assess | Improve | Manage
Information Technology

Thursday

2:40 p.m. – Building ADA Compliant Websites

3:20 p.m. - Smart Cities 101

Friday

11:20 a.m. - Be Prepared with a Cybersecurity Incident Response Plan

12:20 p.m. - Visualizing your Data

2:45 p.m. - Protecting Your Municipality from Human Error

3:15 p.m. - Safekeeping Data: Beyond Password Protection

Saturday

9:45 a.m. - Crafting a Social Media Policy

11:45 a.m. - Streamlining Business License Applications

1:10 p.m. - Text Messaging Archiving Basics

13

Assess | Improve | Manage
Information Technology

Don't forget to turn in your card!

LESS than a push

All day in your life

Touch ID fingerprint sensor

14

Assess | Improve | Manage
Information Technology

5